

premium percale sheet range



Here at Lorraine Lea we pride ourselves on having a great quality Premium Percale Sheet Range at an affordable price that will last for years. Here we explain the 'ins-and-outs' of our sheeting construction and why it's the best of the best!

thread counts explained

Thread count is the number of threads (or yarns) per 10cm square of fabric. Higher quality yarns tend to be thinner, therefore can be more tightly woven to produce a higher thread count. Our Lorraine Lea exclusive sheeting is made with only high quality yarns woven into 250-thread count sheeting, giving our customers durable sheeting that will last years and years whilst keeping the price affordable.

A higher thread count does not always mean a better sheet. Some higher thread count sheeting in the marketplace is woven with poor quality yarns to keep the pricing down for the consumer, but unfortunately these sheets will not last the test of time. Our sheets are also quality-tested to strict measures, so we are confident we are offering our customers the best lower thread count sheeting in the market place.

fabric construction explained

In weaving the fabric, there are two parts: the warp and the weft. The warp is the set of lengthwise yarns that are held in tension on a frame or loom. The yarn that is inserted over-and-under the warp thread is

called the weft. Fabric weights and appearances can be changed by increasing or decreasing the amount of warp or weft in a fabric, known as the *cover factor*.

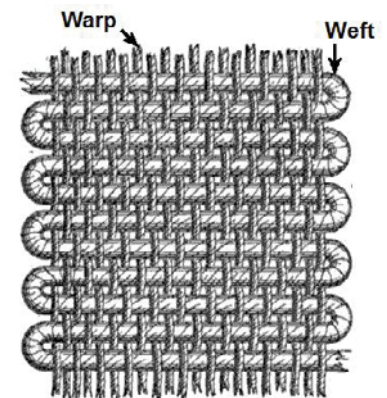
It can also be changed considerably by adjusting the thread count used to weave the cloth. Heavier yarns with an increased warp and weft will result in a heavier, more closely woven cloth. However, increasing the warp and weft and reducing the thread count with higher quality yarn will result in a finer fabric with a smoother surface, as is the case with our Premium Percale Sheeting.

plain weave explained

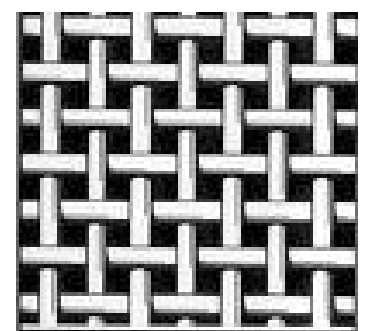
This is the weave most commonly used for sheeting or shirting. We do not differ from tradition, as this is the most durable way of weaving a sheet and will stand the tests of time.

percale fabric explained

Percale is a medium weight fabric that can be dyed or printed, and is made of various yarns. Our sheeting is 50% polyester and 50% cotton, the perfect blend for durability and easy care washing with minimal ironing.



fabric weaving



plain weave